

The CopperSmith

Farm House Hook (FHH) Installation Instructions

Installation should be performed by a licensed professional.

Refer to the Gas and Electric Lantern Installation Instructions included with the lantern before beginning the installation.

1. Remove the contents of the packing and assure that all of the parts shown on figure 1 are included in the box.

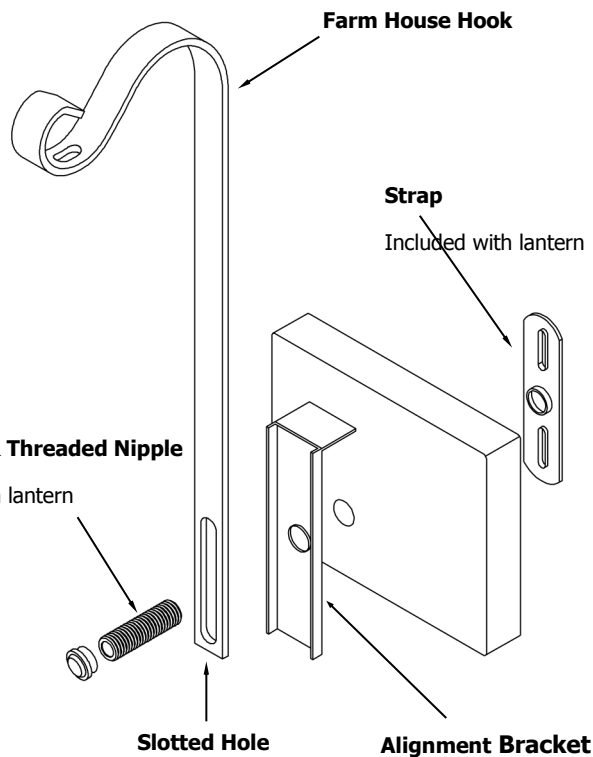
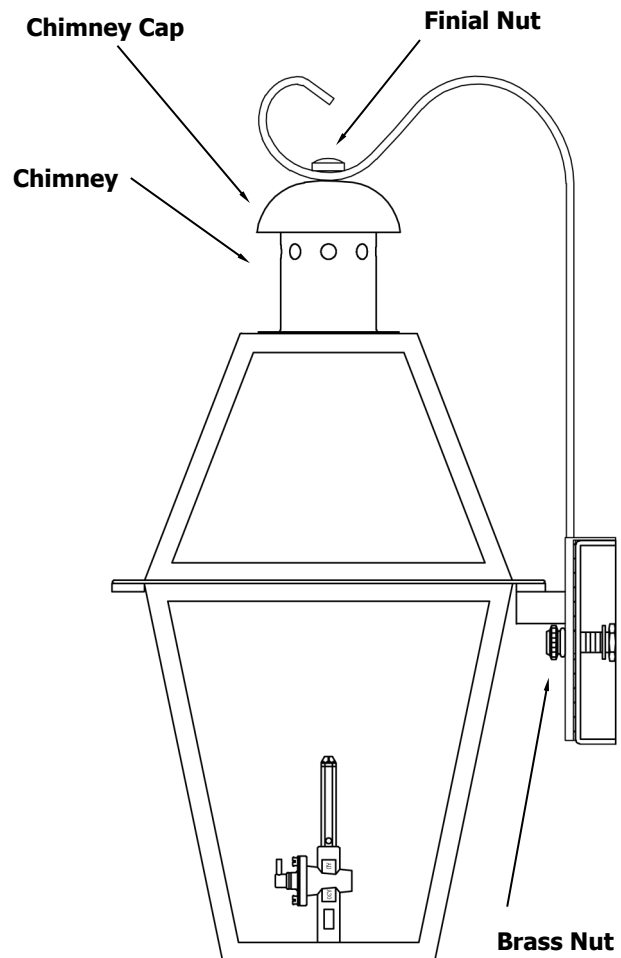


Fig. 1

The lantern has been removed from drawing for clarity.

2. While performing step 4 of the Lantern Installation Instructions, Allow 1 1/2" of threads to extend past the mounting bracket.
3. When performing step 5 of the Lantern Installation Instructions, slide the alignment bracket onto the threaded nipple after the lantern is put onto the threaded nipple.
4. Place the Farm House Hook onto the threaded nipple and Tighten the brass nut onto the threaded nipple.
5. Place the Top Ring onto the top scroll as shown.



6. Remove the top finial nut and adjust the threaded nipple attaching the chimney cap, adjust an additional 1/4" of threads extending above the chimney.
7. Connect the top of the lantern to the FFH by re attaching the top finial.
8. The Farm House Hook is provided with a slotted hole to allow for vertical adjustment.
9. Adjust the Top Scroll until the Top Ring is snug.
10. Use adjustable pliers to tighten the Brass Nut securing the Farm House Hook and Lantern to the mounting surface.

For additional technical assistance:

251.621.3435

TOLL FREE: 866.249.1918